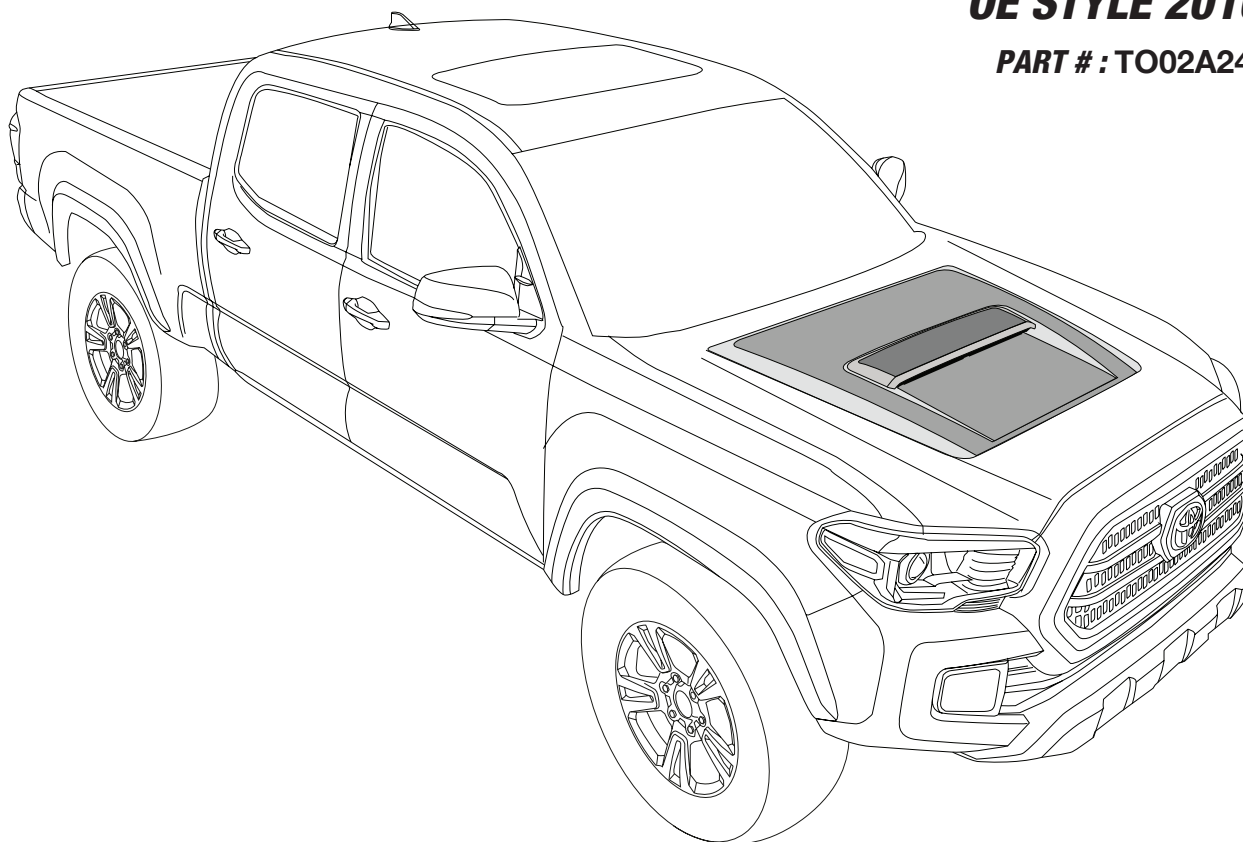


INSTALLATION MANUAL**HOOD SCOOP TACOMA
OE STYLE 2016****PART # : TO02A24**

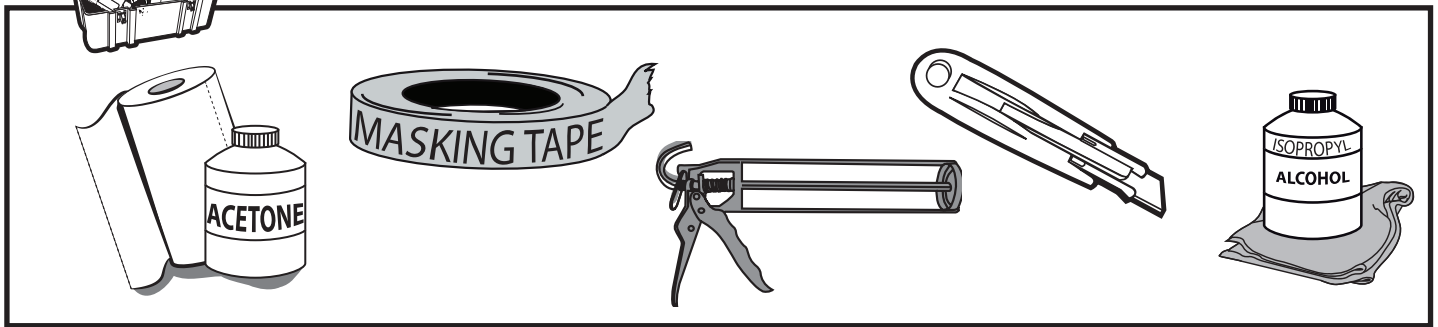
WARNING!! Do not install Hood Scoops or other Body Parts directly Over Wrapped areas. Before installation of the parts , you must leave at least a 1/4" (6mm) perimetral clearance "Free from Vinyl" surrounding the part, before Part installation.








WARNING!! Do not install Hood Scoops Over Vinyl or Over Plastic Stripes on the Hood: 3M Adhesive Tape and PUR Adhesive must always be in contact with the Sheet Metal of the vehicle.



WARNING!! Rust Prevention Oils and other Petrol Based Anti Rust Treatments for Vehicles may affect 3M's Double Adhesive Tape and Polyurethane Adhesive performance!

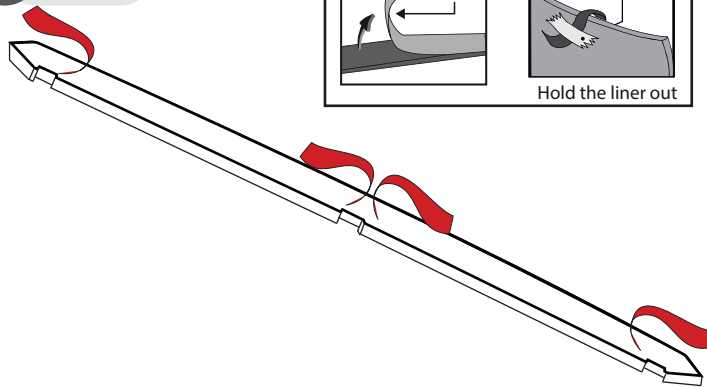

TOOLS

CHECK LIST

*Already installed in the part

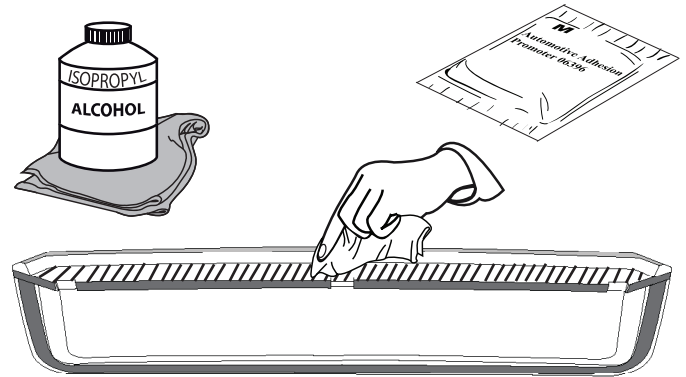
ITEM	DESCRIPTION	DRAWING	AMOUNT
A	VHB TAPE		Included in the parts
B	ADHESIVE POLYURETHANE		1
C	WAX PENCIL		1
D	ADHESION PROMOTER		1
F	SCREW TORX 3/16" X 3/4"		2

INSTALLATION MANUAL

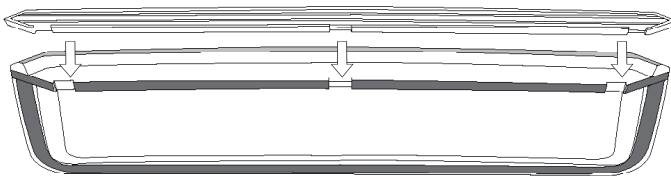
1 PEEL



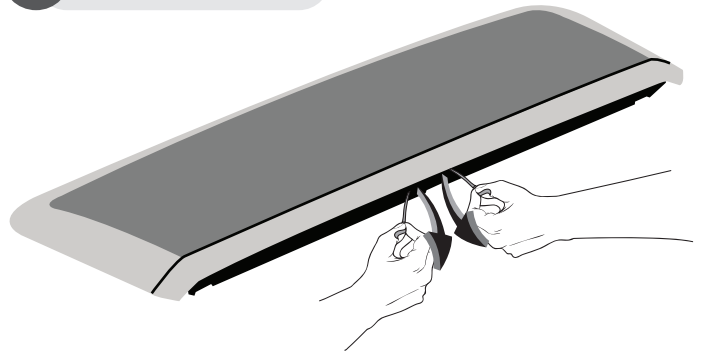
2 CLEAN AND APPLY ADHESIVE PROMOTER



3 PLACE



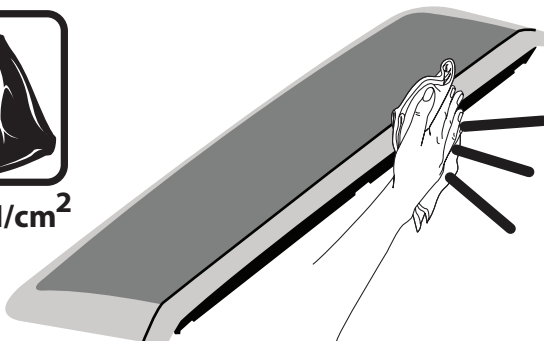
4 REMOVE LINER



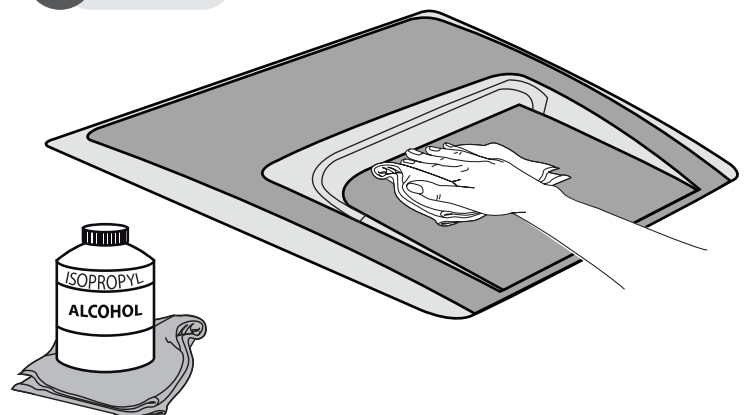
5 PRESS FIRMLY



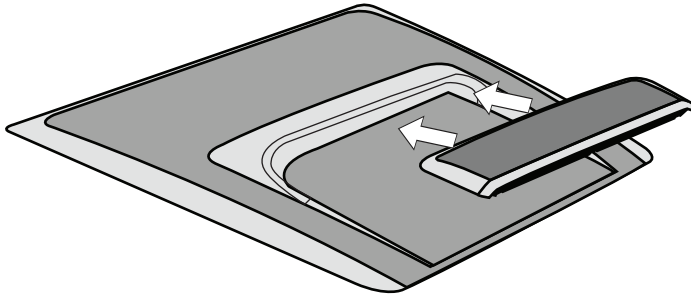
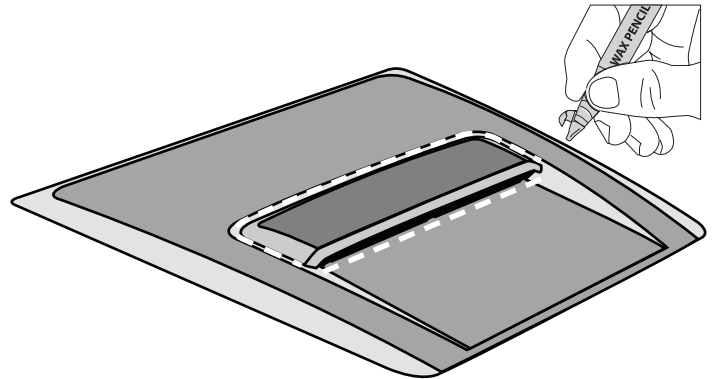
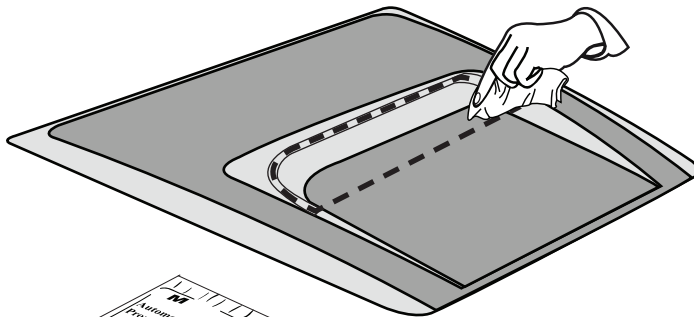
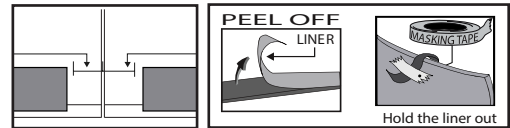
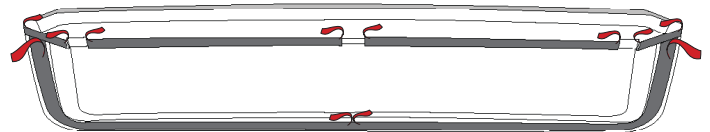
40-50 N/cm²



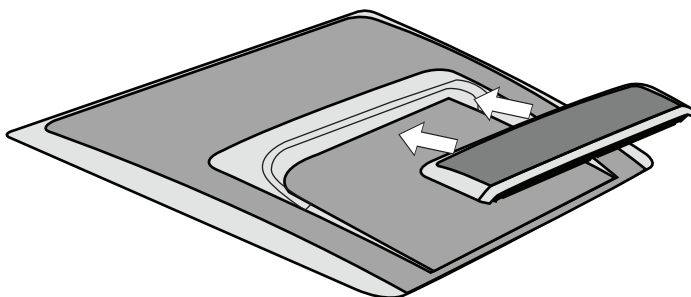
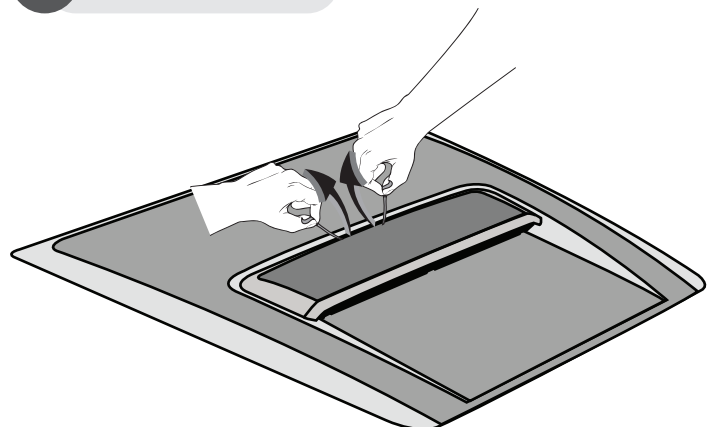
6 CLEAN



! A full surface contact between tape and substrate is decisive for good adhesion performance. Contact is achieved by applying pressure. In practice a pressure between 40 and 50 N/cm² is usually needed and an application temperature between 25 and 45 °C or 77 and 113 °F is also necessary. During application, add-on parts and tapes must have the similar temperature.

7 PLACE

8 MARK

9 APPLY ADHESIVE PROMOTER

10 PEEL

 PEEL OFF
LINER

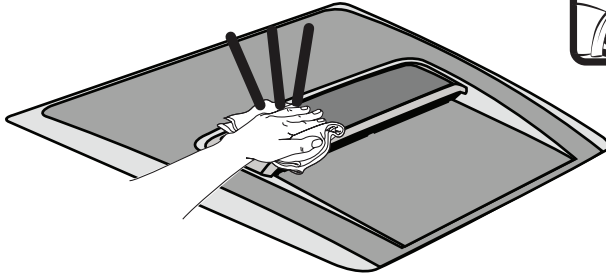
 MASKING TAPE
Hold the liner out

11 PLACE

12 REMOVE LINER


INSTALLATION MANUAL

5 PRESS FIRMLY

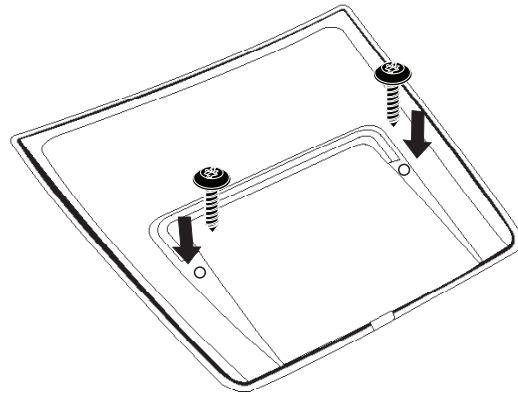
40-50 N/cm²



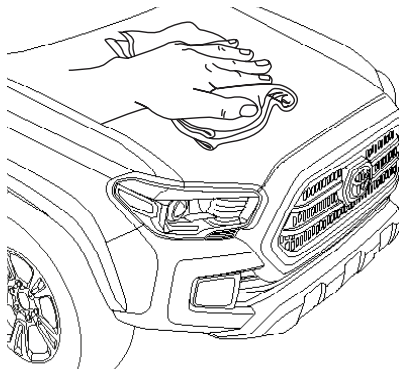
6 PLACES SCREWS



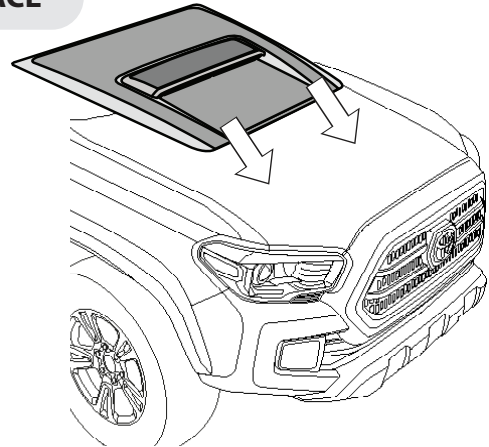
R VIEW



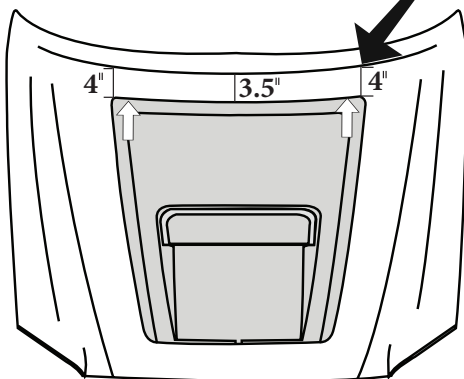
7 CLEAN



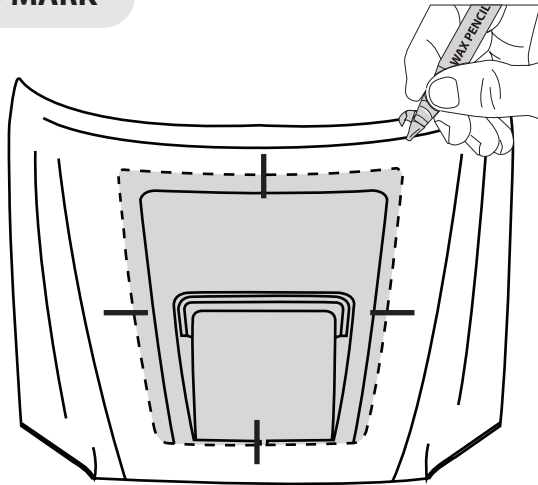
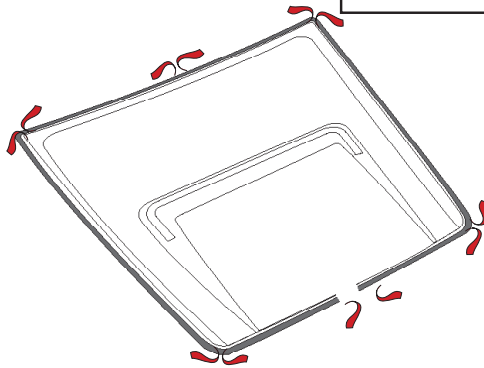
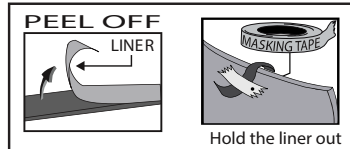
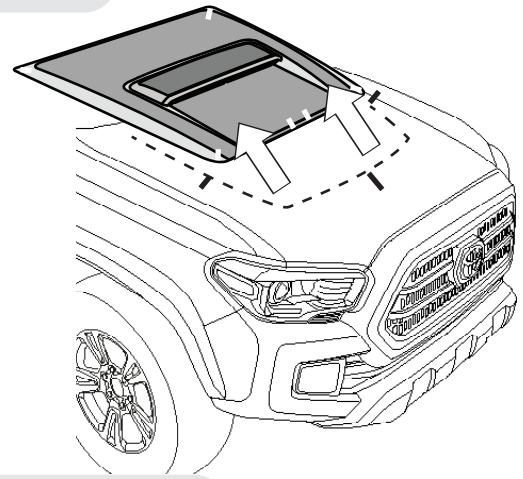
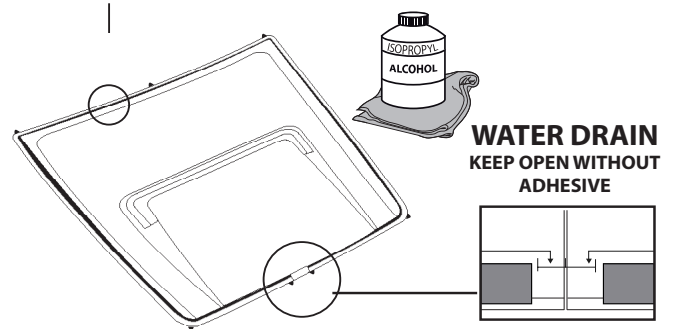
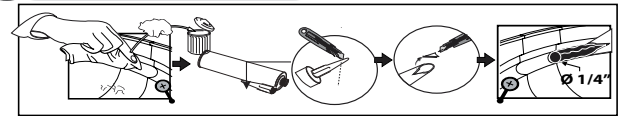
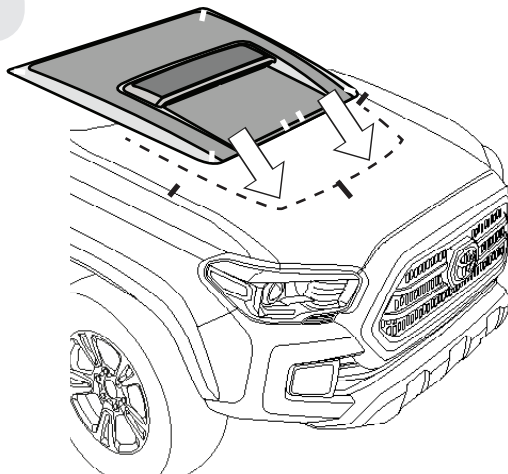
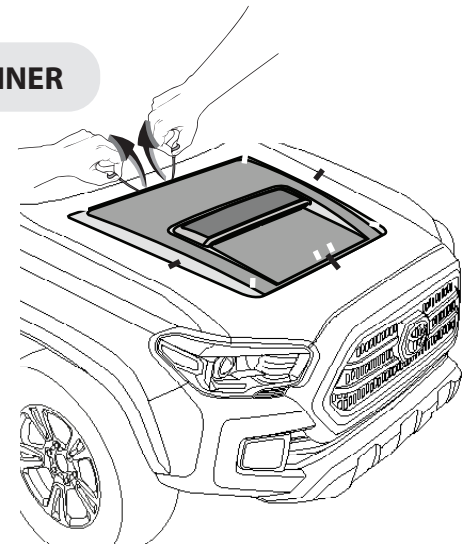
8 PLACE

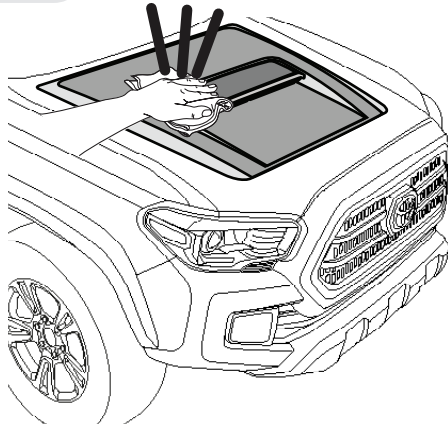


9 ALIGN & CENTER



A full surface contact between tape and substrate is decisive for good adhesion performance. Contact is achieved by applying pressure. In practice a pressure between 40 and 50 N/cm² is usually needed and an application temperature between 25 and 45 °C or 77 and 113 °F is also necessary. During application, add-on parts and tapes must have the similar temperature.

INSTALLATION MANUAL
10 MARK

12 PEEL

11 REMOVE

13 APPLY ADHESIVE

14 PLACE

15 REMOVE LINER


INSTALLATION MANUAL**16 PRESS FIRMLY****40-50 N/cm²**

A full surface contact between tape and substrate is decisive for good adhesion performance. Contact is achieved by applying pressure. In practice a pressure between 40 and 50 N/cm² is usually needed and an application temperature between 25 and 45 °C or 77 and 113 °F is also necessary. During application, add-on parts and tapes must have the similar temperature.

17 CLEAN OFF GREASE PENCIL MARK